



Public Information Session

Town Hall
February 25, 2014

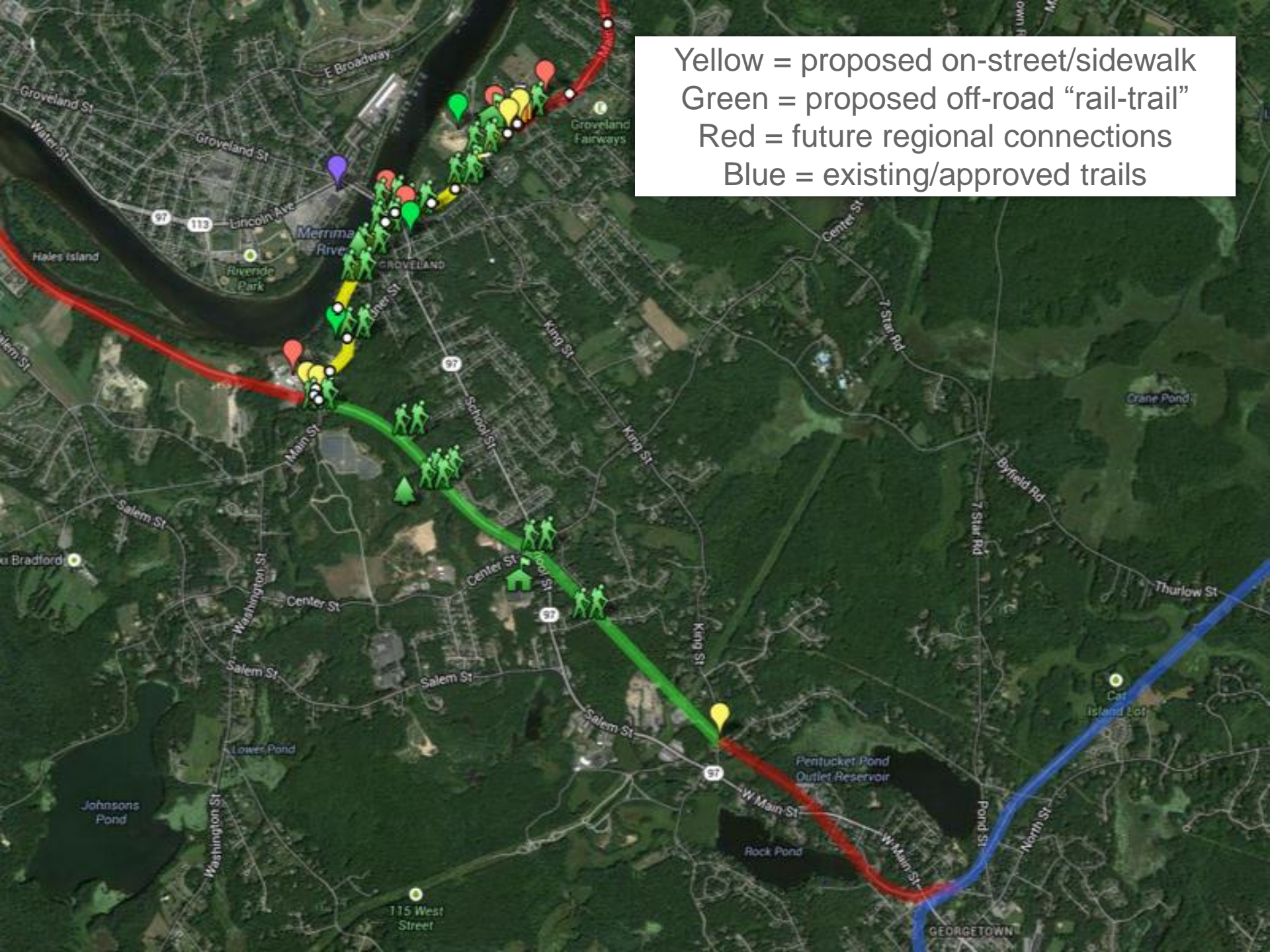
www.GrovelandCommunityTrail.org
"Like" on [Facebook](#)

facebook

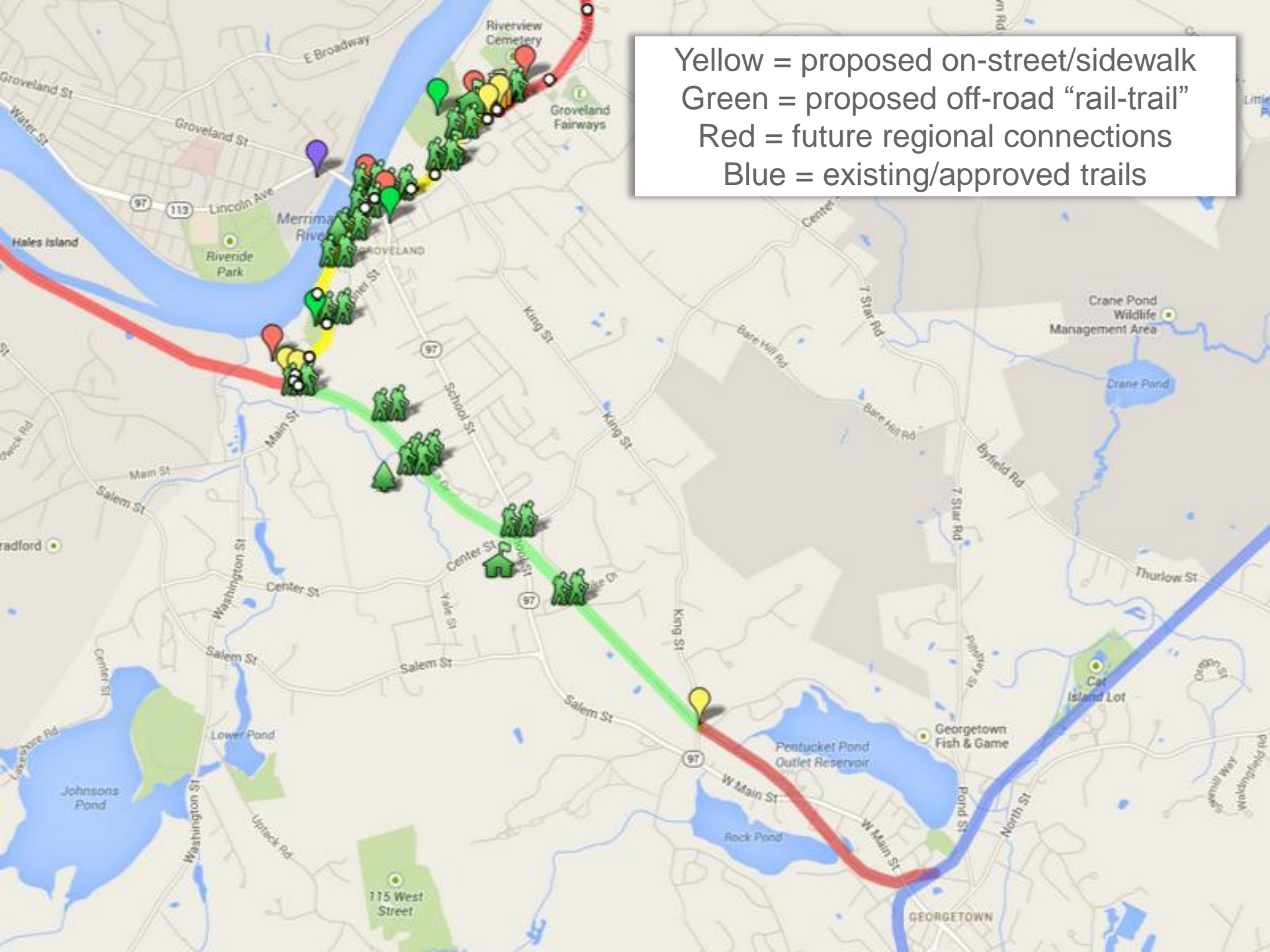
This evening

1. Project overview, vision & current status
2. Community benefits
3. April 28th Town Meeting warrant article
4. Residents' questions/ideas/suggestions
5. Next Step: organizing for April 28th vote

Yellow = proposed on-street/sidewalk
Green = proposed off-road "rail-trail"
Red = future regional connections
Blue = existing/approved trails



Yellow = proposed on-street/sidewalk
Green = proposed off-road "rail-trail"
Red = future regional connections
Blue = existing/approved trails



What is the Groveland Community Trail?

A project to **unite our community** with safe, healthy, and scenic recreation & pedestrian transportation

A 3.25 mile, non-motorized shared use “rail-trail” path

1. On-street/sidewalk: Main Street, Town Hall to Esty’s
2. Off-road: utility/former rail corridor, Esty’s to King Street

Will incur no tax increase and be 100% paid for with available CPA and MassDOT funds

A warrant article will be voted at April 28th Town Meeting

- To commit CPA funds to pay for conceptual design to allow project leaders to responsibly engage all interested parties (e.g., abutting property owners, National Grid, MassDOT, regional and local boards & committees).

Vision: A More Connected Groveland

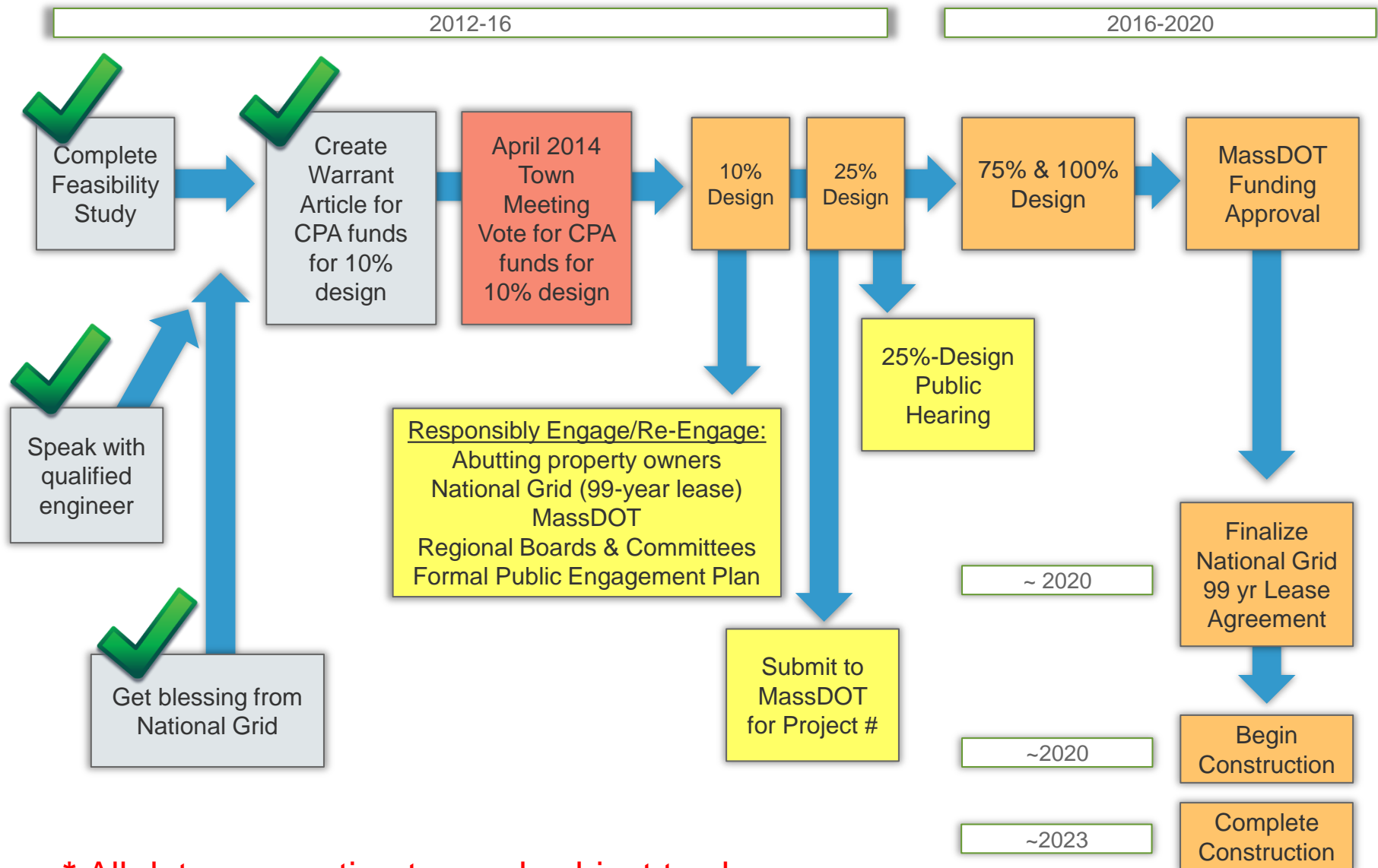
Community assets **connected** by safe, healthy, and scenic recreation & pedestrian transportation:

- The Pines Recreation Area & Groveland Dog Park
- Town Hall Complex (Library, Police, Fire)
- Perry Park School
- Groveland Center (Diner & other businesses, walk to Haverhill)
- Scenic open space along Merrimack River and “rail-trail” corridor
- Shanahan Field & future Center Street Greenway recreation areas
- **Bagnall Elementary School**
- *Throughout*: Multiple residential neighborhoods
- *Future*: regional access via Georgetown, West Newbury, Bradford

Current project status

- Feasibility Study Completed in 2012 by MVPC ([PDF](#))
- MVPC ([PDF](#)), Essex National Heritage ([PDF](#)) strongly support its alignment to regional efforts
- National Grid is engaged and supportive of continuing dialogue when conceptual design is complete
- Early title work raises no obvious non-starter red flags
- OSTC has engineer's quote for 10% and 25% design: (10% up for warrant article vote at April 28th Annual Town Meeting)

Abridged project timeline



* All dates are estimates and subject to change

Community benefits

Safe, scenic, and healthy recreation & pedestrian transportation

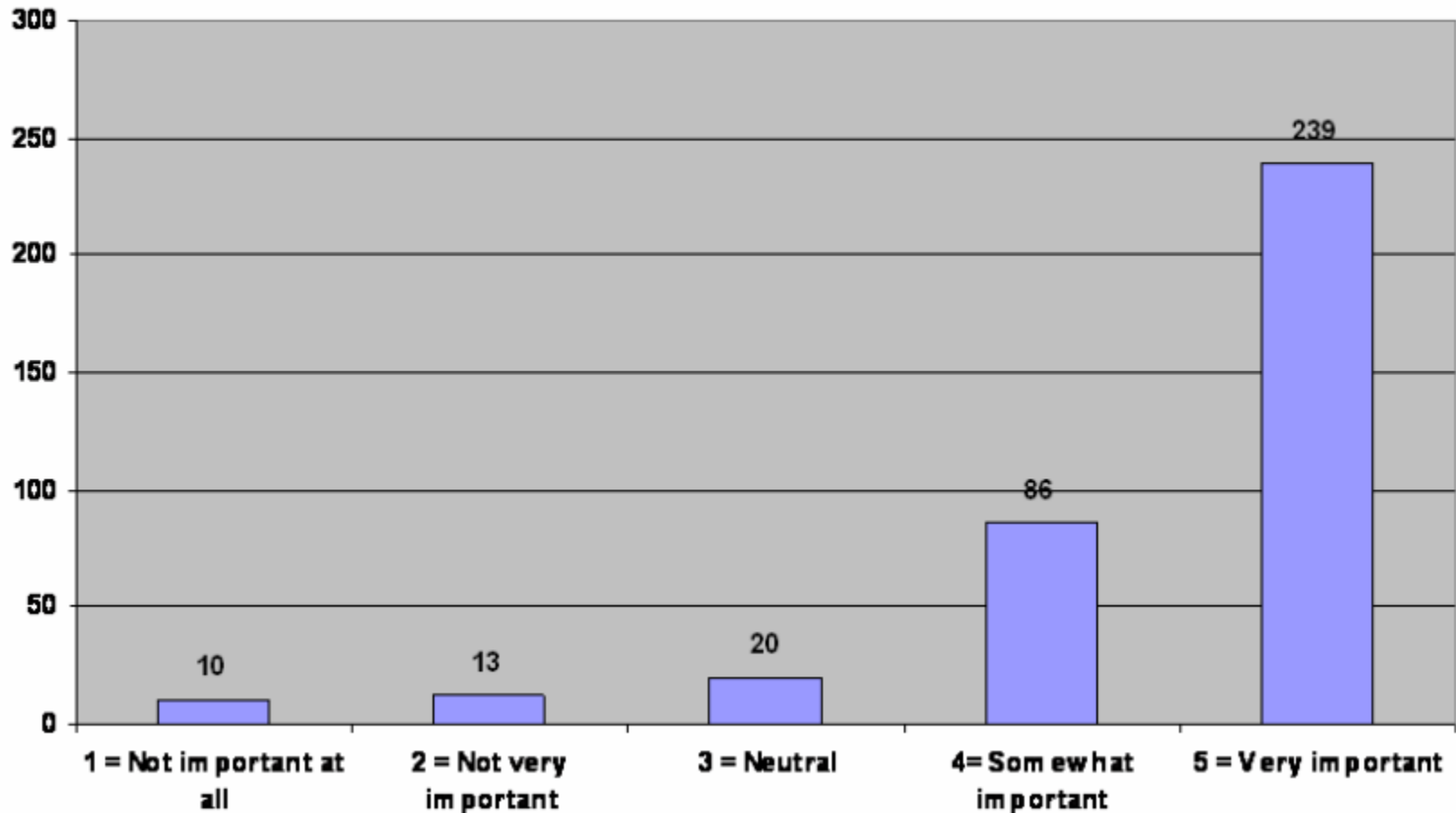
1. Aligning with Town's most recent draft Master Plan
2. Aligning with 2010 Open Space Survey results

e.g., walk/bike/stroller/other to:

- Bagnall Elementary & Perry Park School
- The Pines, Shanahan Fields, Center Street Greenway
- Groveland Center, Groveland Diner, Elm Park, Post Office, River's Edge Plaza
- Town Hall, Library, Police, Fire
- Beautiful, natural open space
- Multiple residential neighborhoods

86% support open space for recreation

4E. How important is it to you to preserve: Open space for recreation purposes?

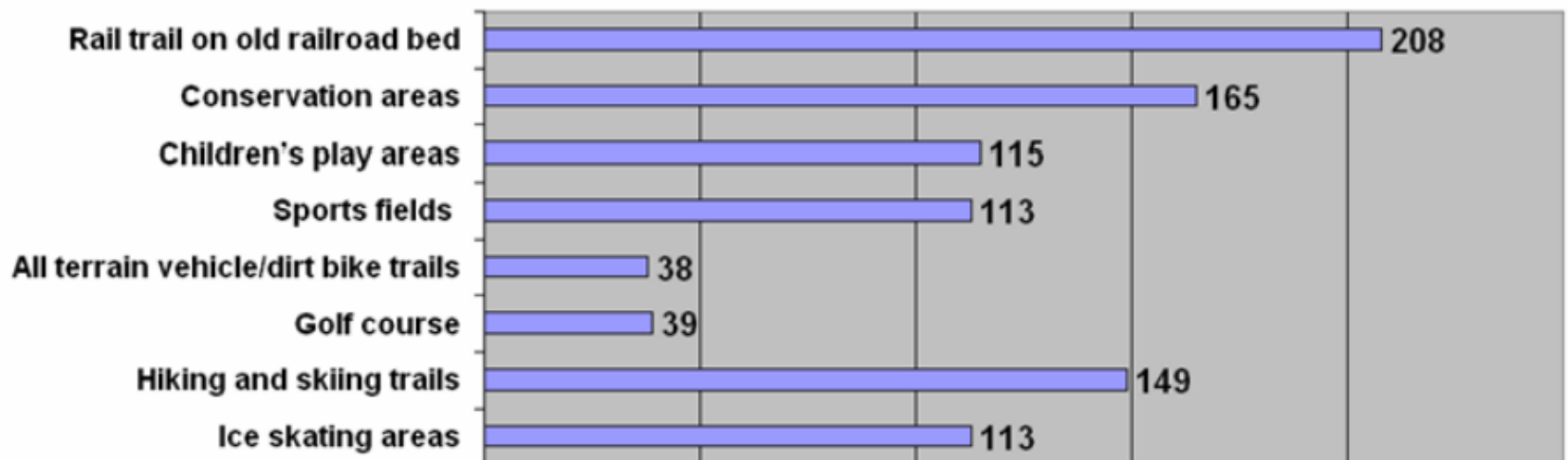


Results from 2010 Open Space Survey, n=378

Rail-trail #1 desired recreation facility

12. Please check off the top five recreation facilities you feel are needed

- | | |
|--|---|
| <input type="checkbox"/> Rail trail on old railroad bed (For bikes, pedestrians) | <input type="checkbox"/> Local neighborhood parks |
| <input type="checkbox"/> Conservation areas | <input type="checkbox"/> Outdoor performance space |
| <input type="checkbox"/> Children's play areas | <input type="checkbox"/> Family picnic areas |
| <input type="checkbox"/> Sports fields (Baseball, soccer, softball, etc.) | <input type="checkbox"/> Improved river access |
| <input type="checkbox"/> All terrain vehicle/dirt bike trails | <input type="checkbox"/> Improved Johnson's Pond access |
| <input type="checkbox"/> Golf course | <input type="checkbox"/> Indoor recreation facilities |
| <input type="checkbox"/> Hiking and skiing trails | <input type="checkbox"/> Swimming pool |
| <input type="checkbox"/> Ice skating areas | <input type="checkbox"/> Tennis courts |
| <input type="checkbox"/> Large multi-use park | <input type="checkbox"/> Swimming beach |
| <input type="checkbox"/> Other _____ | |



Paying for the project

➤ All Design Costs: paid for by the Town

- 100% of Groveland's investment paid for by existing CPA funds
- Payments staggered over multiple years
- First installment to be voted on at Annual Town Meeting, April 28th

➤ All Construction Costs: paid for by MassDOT

- Funded via Transportation Alternatives Program (TAP) and under MassDOT's larger GreenDOT initiative
- Typical investment is 10x the Town's

Warrant article: for vote April 28th

- › The Article: ... vote to appropriate a sum of up to ONE HUNDRED AND FIFTY THOUSAND DOLLARS (\$150,000) from the Community Preservation Fund General Reserve FY-2015 to be made available for the purpose of the development of a plan for the Groveland Community Trail ... under the CPA category of Open Space and be completed no later than June 30, 2017
- › This warrant article will allow project leaders to responsibly engage:
 - **Lawyer** to complete title work
 - **Engineer** to complete a conceptual design to engage the following interested parties by way of a formal, engineer-led public engagement plan
 - › **Abutting property owners**
 - › **National Grid** to begin dialogue towards 99 year lease agreement
 - › **Georgetown, Bradford & West Newbury** to encourage development of their linkage
 - › **Local & regional boards/committees** (e.g., Planning Board, Board of Selectmen, Conservation Commission, PRSD/Bagnall, MVPC, Essex Heritage, MassDOT)
- › Without passage of the warrant article, the project is at a stand-still

YOU can make this project a reality

- 1. Attend Town Meeting on April 28th**
2. Tell your neighbors, friends, family
3. Join April 17th Public Information Session
4. Keep informed on Facebook & Website

Questions?

Suggestions?

www.GrovelandCommunityTrail.org

"Like" us on [Facebook](#)

Thank you

Michael Davis

Member, Groveland Open Space and Trails Committee

Groveland Project Trail Project Lead

md91180@gmail.com

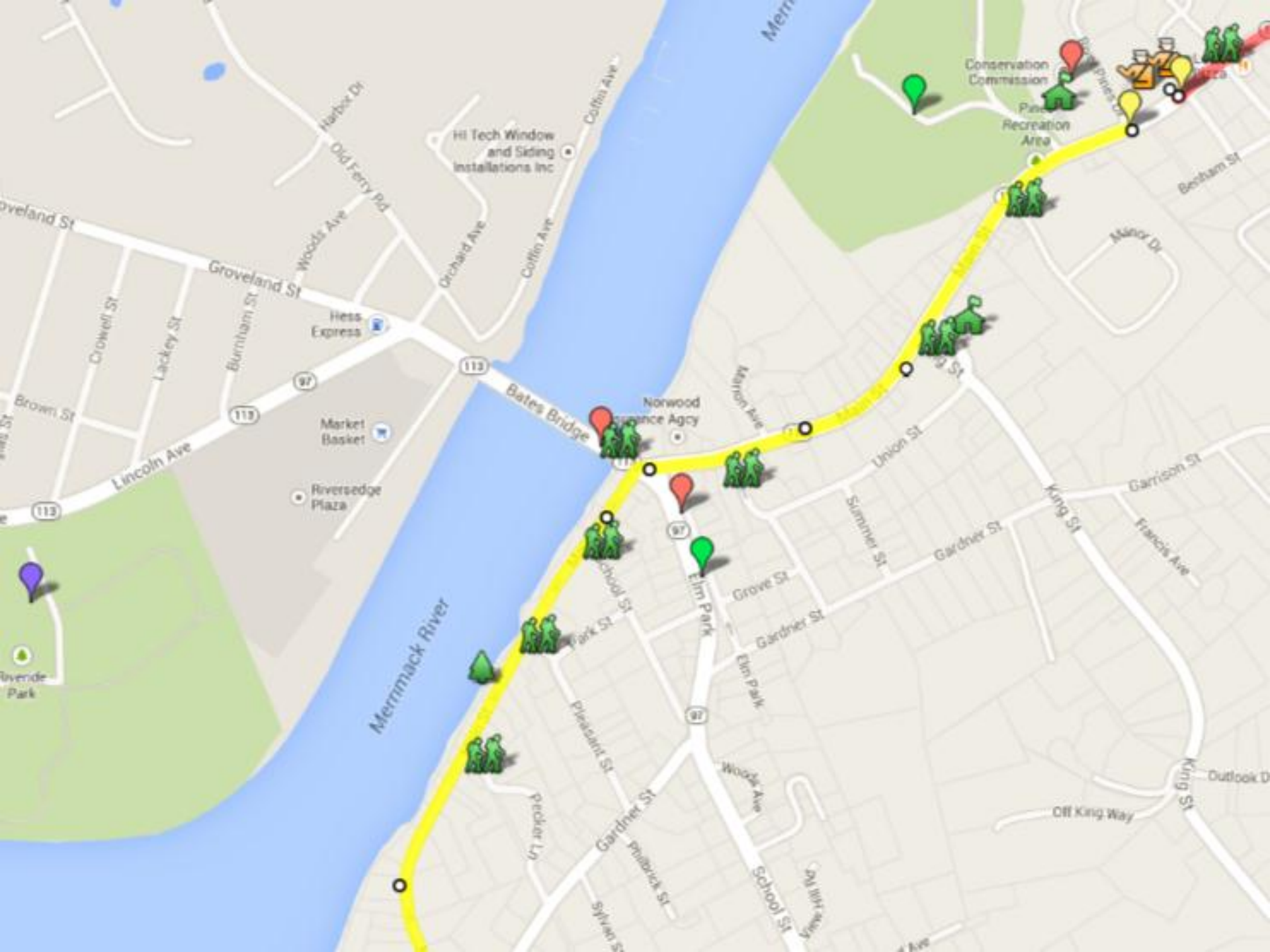
Alex Johnson

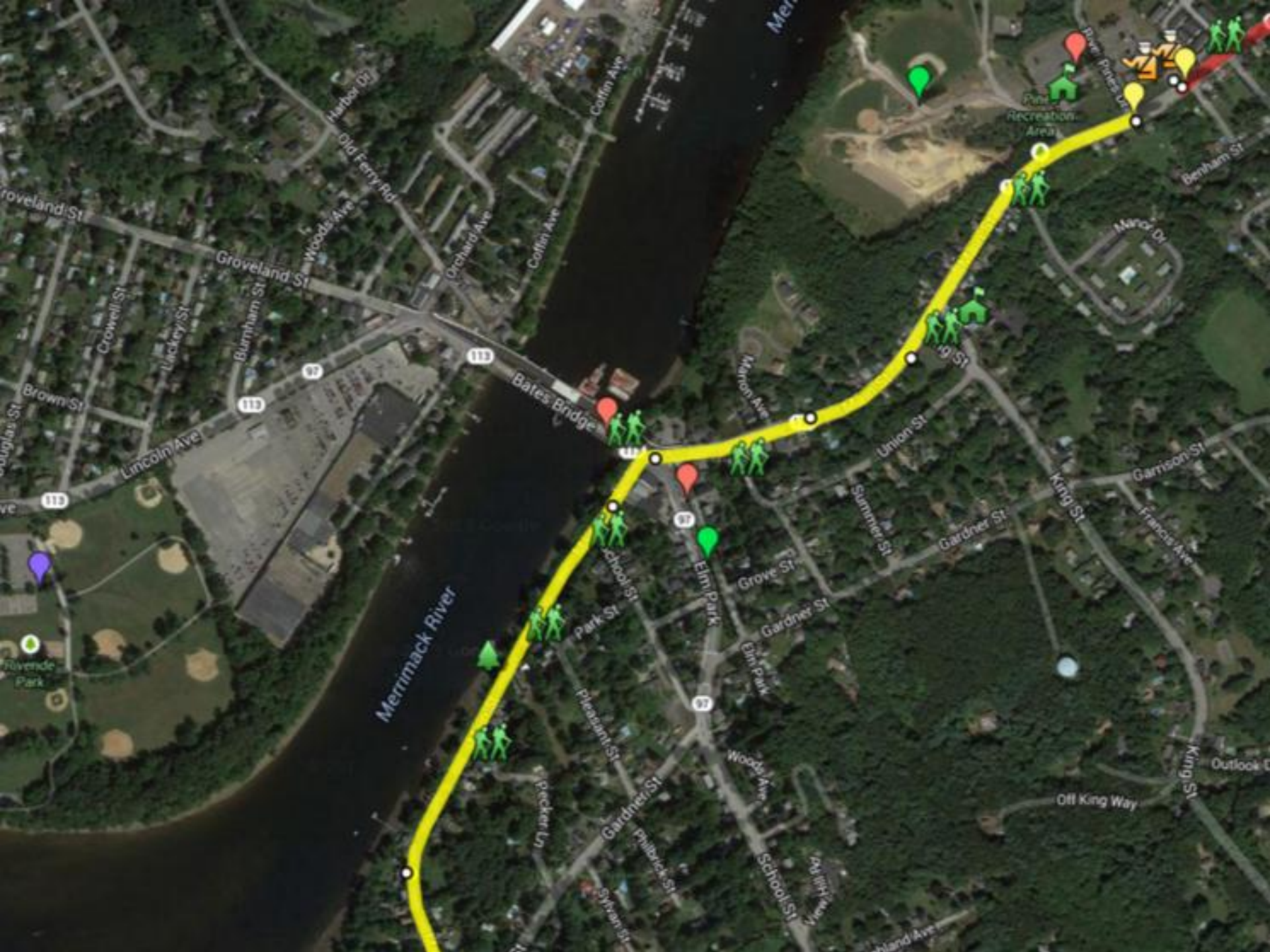
Chair, Groveland Open Space and Trails Committee

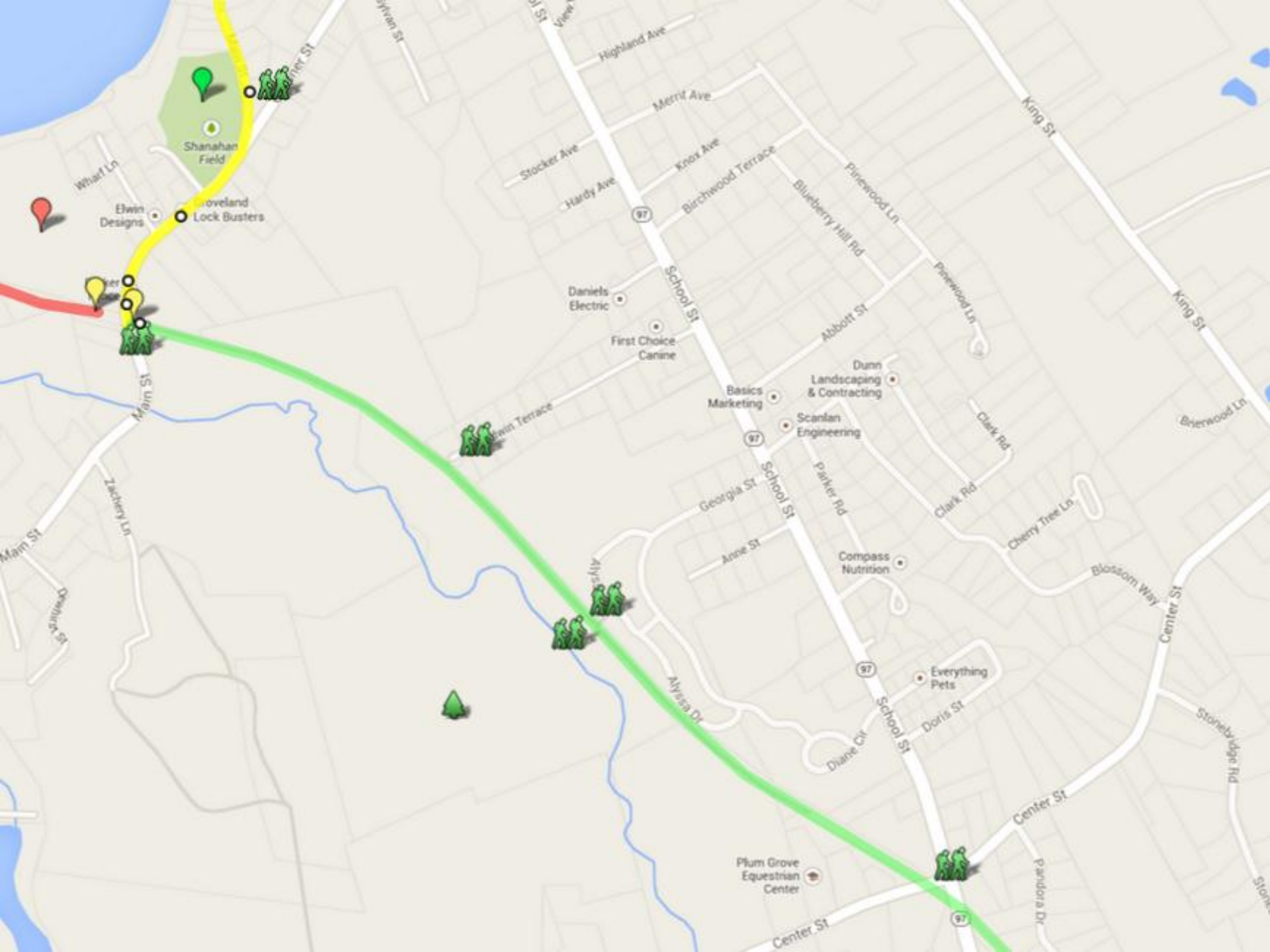
Alex.Johnson1@ey.com

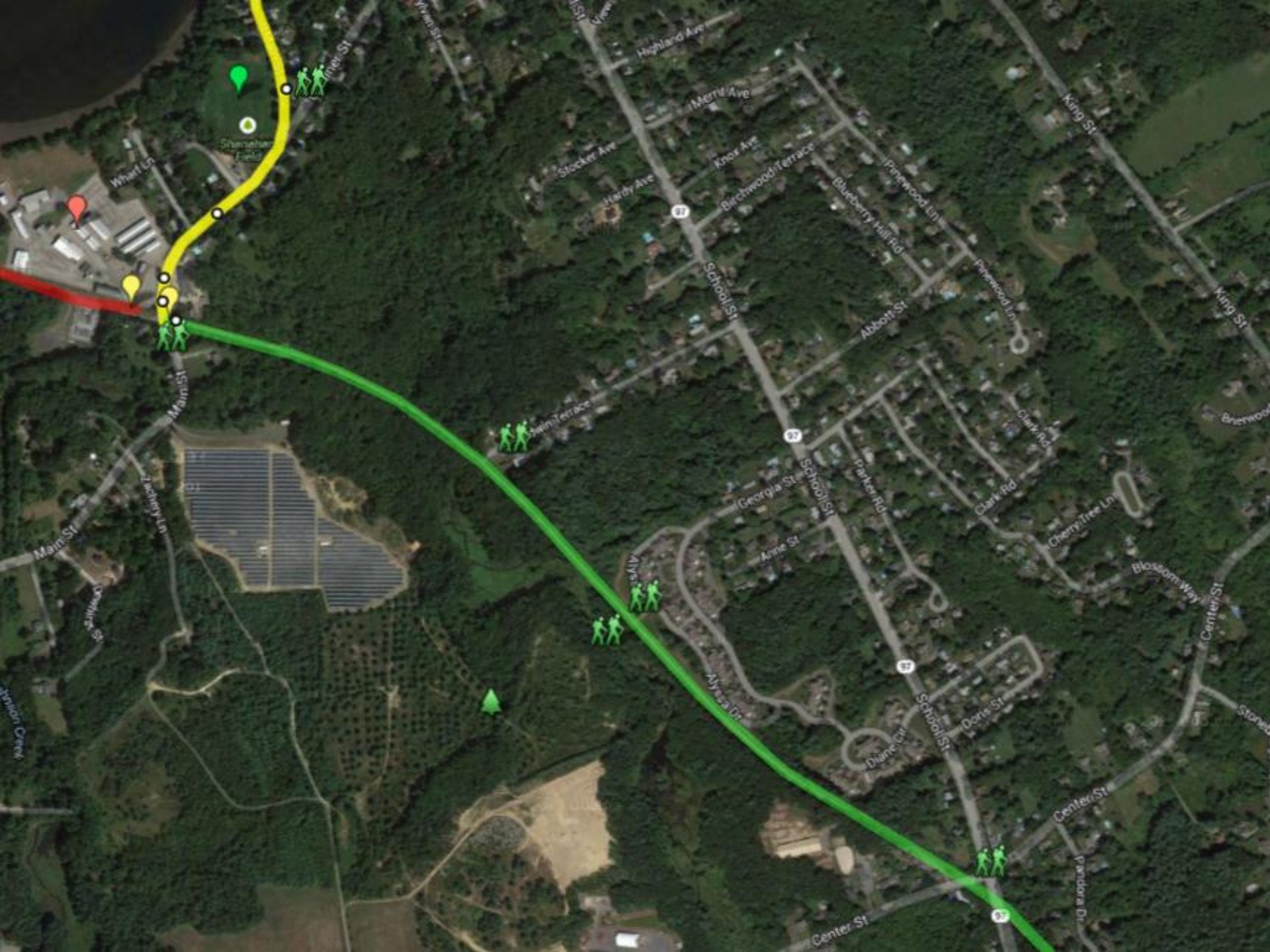
Appendix

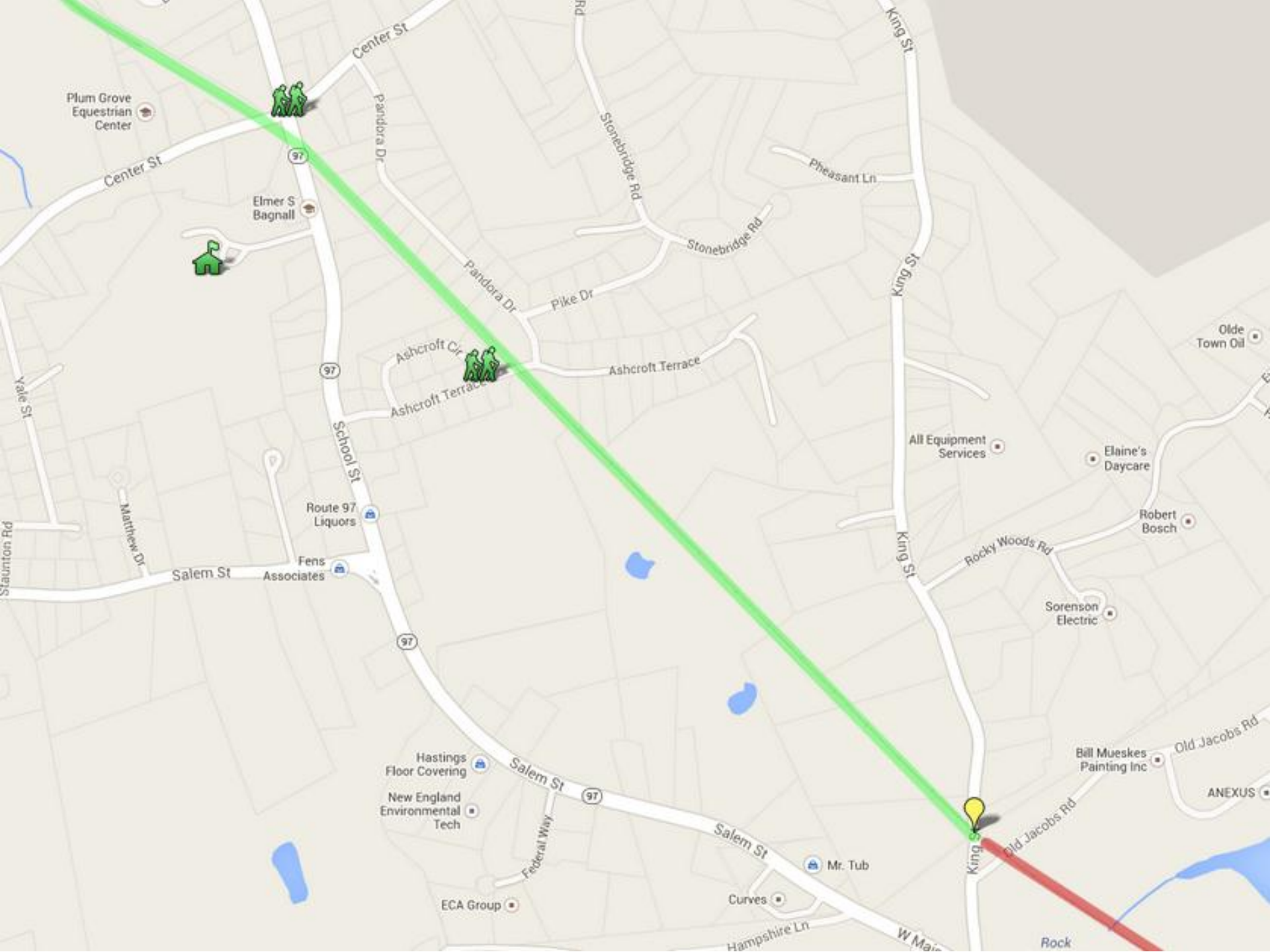
- › Aerial views of individual trail segments
- › Regional trail maps
- › Key online resources

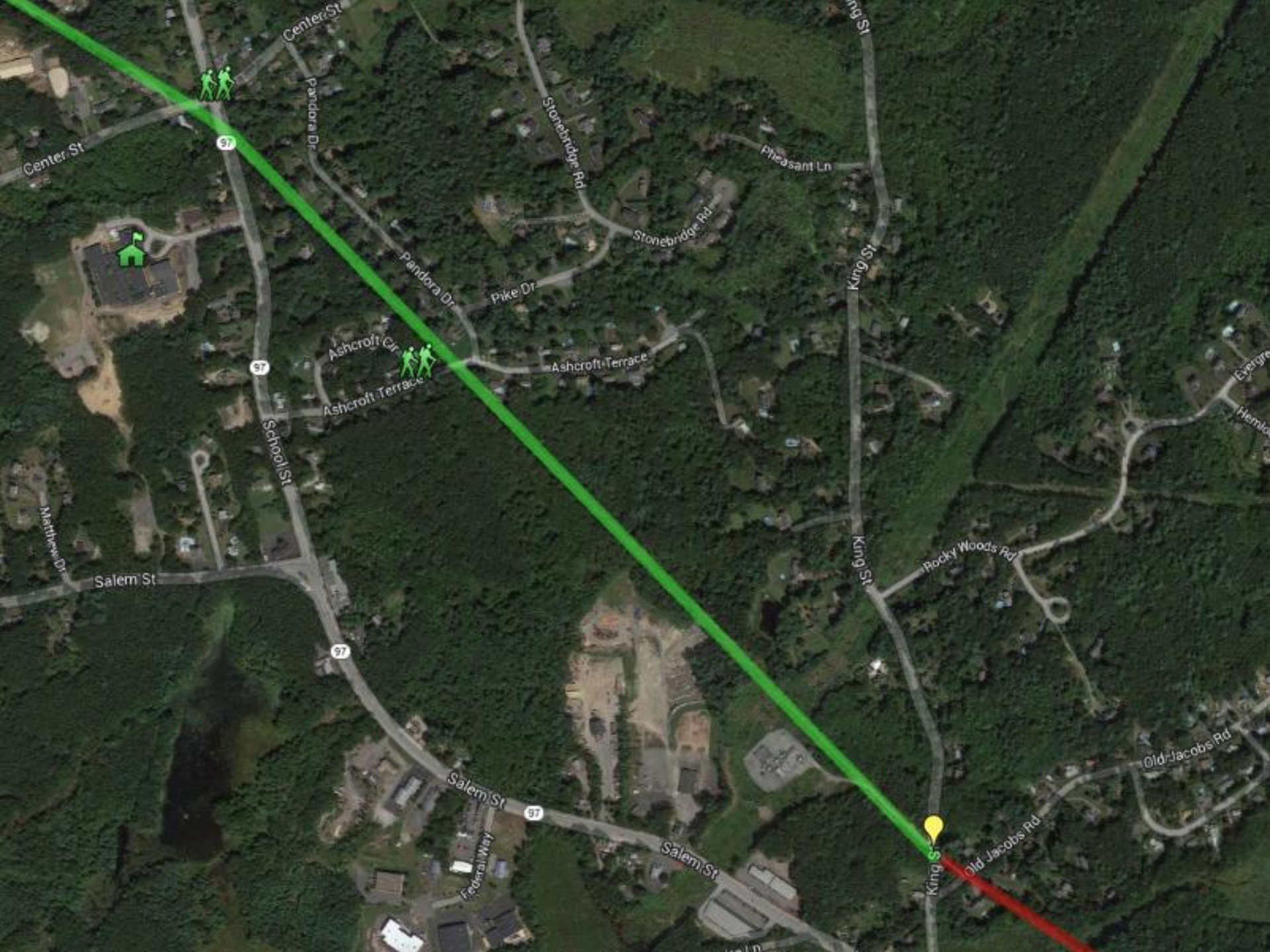




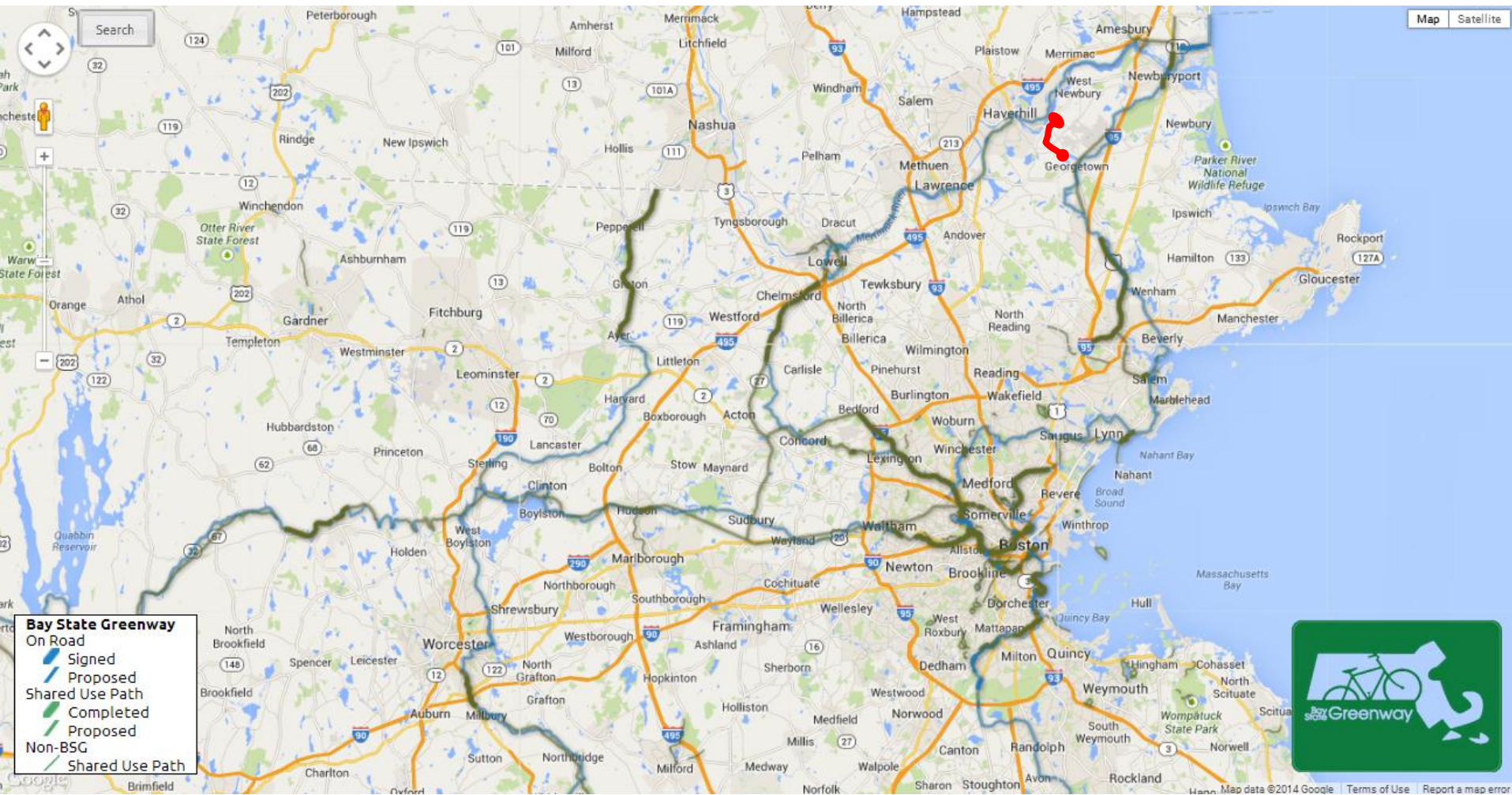




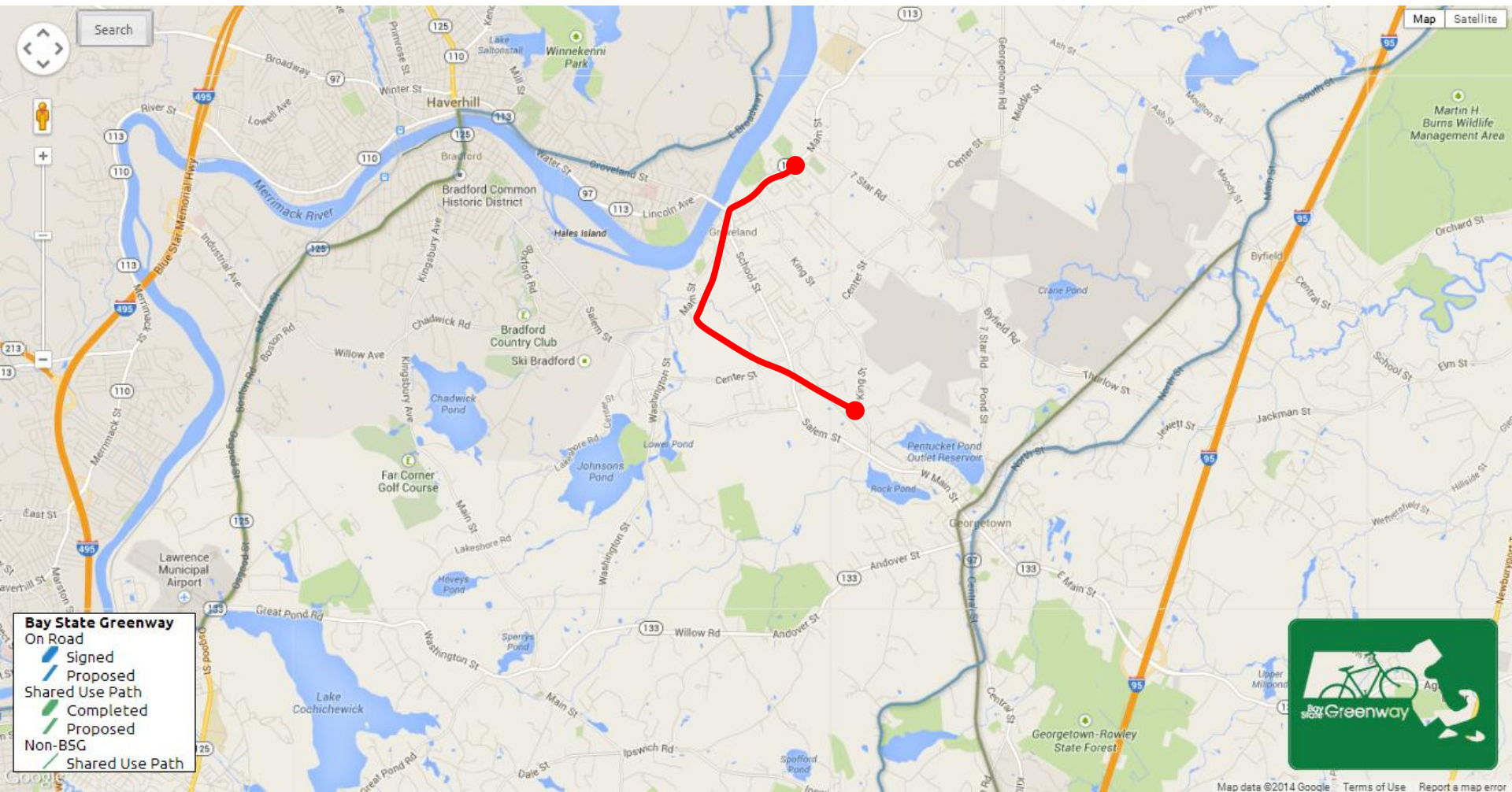




The Bay State Greenway

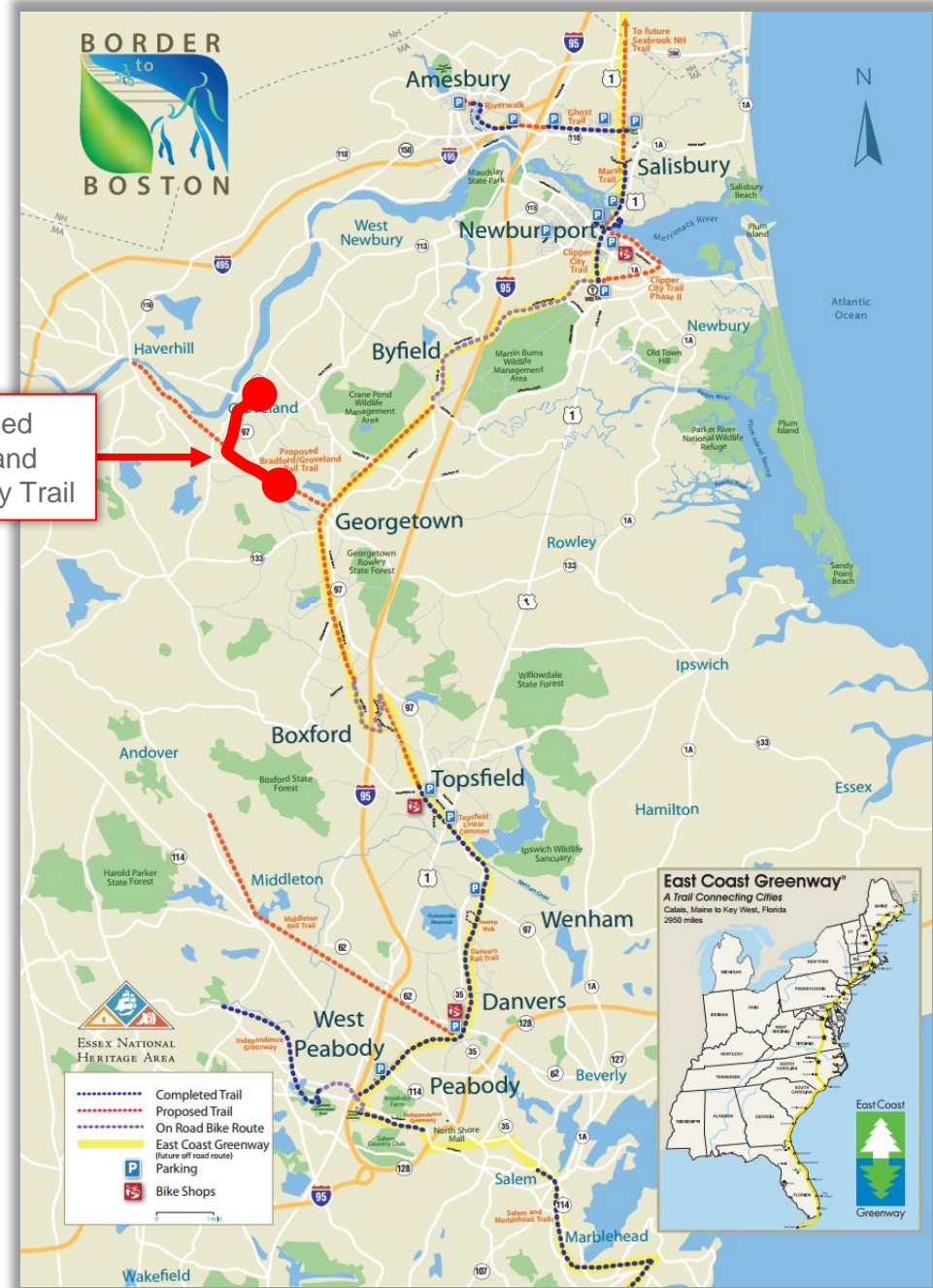


The Bay State Greenway

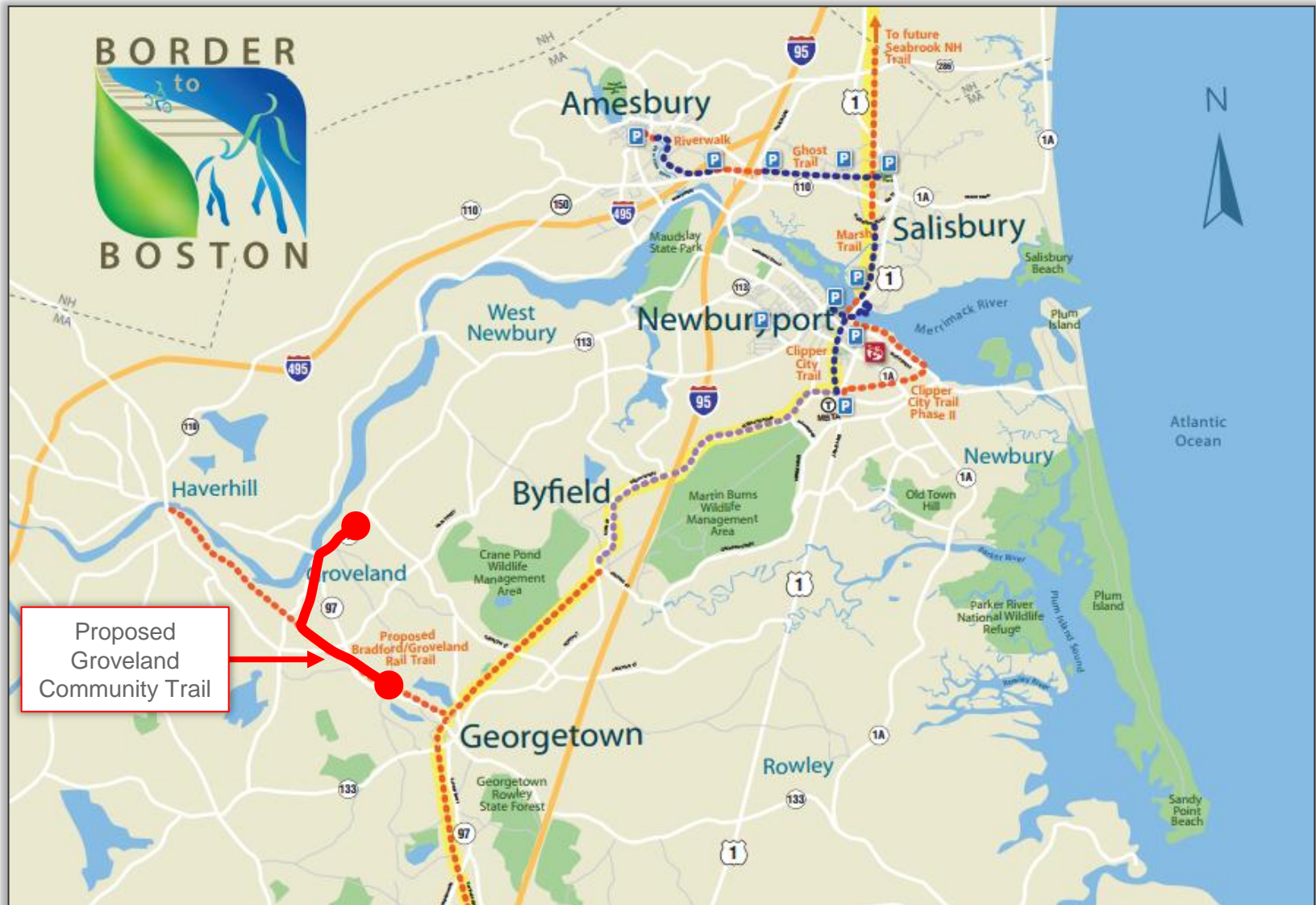


Border to Boston

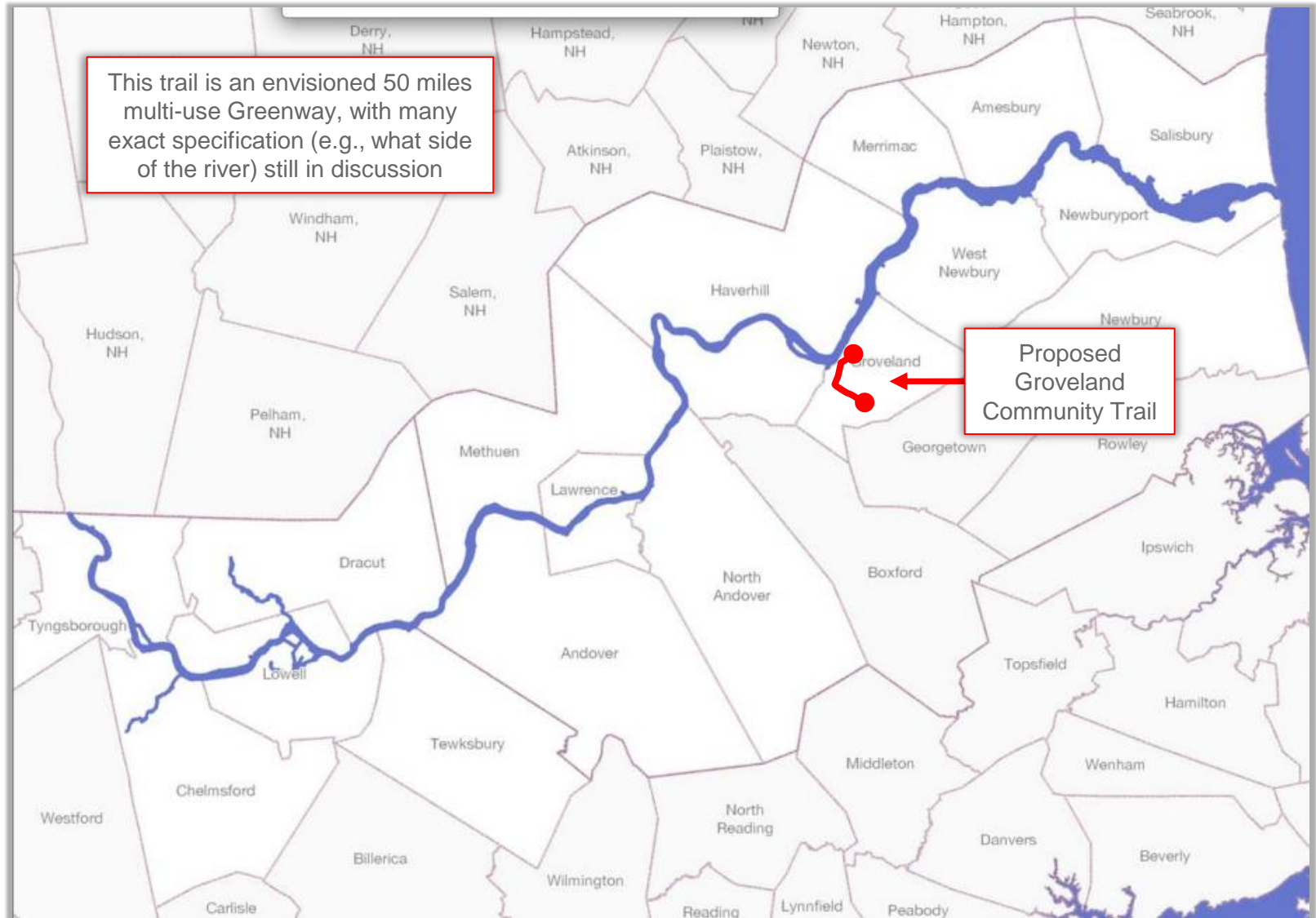
Proposed
Groveland
Community Trail



Border to Boston (North)



Merrimack River Trail



Online resources

› The Groveland Community Trail:

- GrovelandCommunityTrail.org
- Facebook.com/GrovelandCommunityTrail

› Other Towns' Success:

- [Border to Boston Trail](#): Northeastern Massachusetts, 28 miles connecting Salisbury, Newburyport, Newbury, Georgetown, Boxford, Topsfield, Wenham, and Danvers
- [Bruce Freeman Trail](#): Eastern Massachusetts, 25 miles connecting Lowell, Chelmsford, Westford, Carlisle, Acton, Concord, Sudbury, and Framingham
- [Bradford Rail Trail](#): Haverhill, Massachusetts
- [Danvers Rail Trail](#): Danvers, Massachusetts
- [Methuen Rail Trail](#): Methuen, Massachusetts
- [Merrimack River Trail](#): Eastern Massachusetts, proposed to stretch over 40 miles and run through 17 communities from Lowell to Newburyport
- [Cape Cod Rail Trail](#): Cape Cod, Massachusetts, 22 miles connecting Dennis, Harwich, Brewster, Orleans, Eastham, and Wellfleet
- [Minuteman Bikeway](#): Eastern Massachusetts, 11 miles connecting Bedford, Lexington, Arlington, and Cambridge

› **Comprehensive research studies:** many compiled on [website](#) for crime, safety, property values, other

› **MassDOT GreenDOT:** comprehensive environmental responsibility & sustainability [initiative](#)